



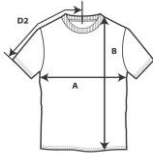
990B



Youth Fashion Basic Tee

DETAILS

Weight	150.0 G/SqM
Content	100% Ring Spun Cotton
Features	Fabric 30/1 High stitch density for smoother printing surface Classic fit Tubular construction Shoulder-to-shoulder tape and seamed collar Twin-needle sleeve and bottom hem TearAway label TrackMyT® number in bottom hem can be traced on trackmyt.com Oeko-Tex® Standard 100 Certified
Sizes	XS-XL
Case Packs	YXS - YXL 72 PIECES
Colours	19
SKU's	95



SPECIFICATIONS

Centimeters	Tol-	Tol+	XS	S	M	L	XL
Chest (A)	1.270	1.270	35.56	38.10	40.64	43.18	45.72
Length from HPS (B)	2.540	2.540	45.72	48.26	52.07	55.88	59.69
Sleeve length (centre back) (D2)	1.905	1.905	29.21	31.75	34.29	36.83	39.37

Inches	Tol-	Tol+	XS	S	M	L	XL
Chest (A)	0.500	0.500	14.000	15.000	16.000	17.000	18.000
Length from HPS (B)	1.000	1.000	18.000	19.000	20.500	22.000	23.500
Sleeve length (centre back) (D2)	0.750	0.750	11.500	12.500	13.500	14.500	15.500

XS-XL

COLOURS	Code	Comments
Black	036	
Caribbean Blue	308	
Charcoal	042	
Chocolate	313	
Green Apple	302	
Heather Blue	321	35% Cotton, 65% Polyester
Heather Green	322	35% Cotton, 65% Polyester
Heather Grey	346	90% Cotton, 10% Polyester
Heather Purple	232	35% Cotton, 65% Polyester
Independence Red	339	
Kelly Green	340	
Light Blue	326	
Navy	032	
Orange	337	
Purple	328	
Red	338	
Royal Blue	051	
Spring Yellow	316	
White	030	

CHANGES

Total Net Change 0 SKU's