

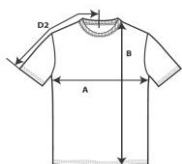
1717

Adult Heavyweight Tee



DETAILS

Weight	207.0 G/SqM
Content	100% ring spun cotton
Yarn Count	22/1
Features	Soft-washed garment-dyed fabric Twin-needle collar Twill taped neck and shoulders Twill label Joker label Twin-needle armhole, sleeve and bottom hems
Sizes	S - 2XL
Case Packs	S - 2XL 60 PIECES
Colours	41
SKU's	205



SPECIFICATIONS

Centimeters	Tol-	Tol+	S	M	L	XL	2XL
Chest (A)	1.905	1.905	44.450	49.530	53.975	58.420	63.500
Length from HPS (B)	2.540	2.540	67.640	71.120	74.625	78.105	80.340
Inches	Tol-	Tol+	S	M	L	XL	2XL
Chest (A)	0.750	0.750	17.500	19.500	21.250	23.000	25.000
Length from HPS (B)	1.000	1.000	26.630	28.000	29.380	30.750	31.630

S-2XL

COLOURS	Code	Comments
Black	01R	
Blue Jean	03P	
Blue Spruce	04P	
Brick	05P	
Bright Salmon	06P	
Burnt Orange	07P	
Butter	08P	
Chalky Mint	09P	
Chambray	08D	
Chili	02R	
Chocolate	10P	
Crimson	12P	
Crunchberry	13P	
Denim	14P	
Flo Blue	16P	
Granite	09D	
Graphite	07R	
Grey	19P	
Heliconia	25R	
Ice Blue	21P	
Island Reef	10D	
Lagoon Blue	12D	
Light Green	24P	
Melon	25P	
Midnight	09R	
Mustard	29P	
Neon Pink	32P	
Neon Red Orange	541	

S-2XL

COLOURS	Code	Comments
Orchid	26R	
Pepper	34P	
Periwinkle	35P	
Raspberry	14R	
Salmon	28D	
Seafoam	38P	
Topaz Blue	28R	
True Navy	18R	
Violet	40P	
Watermelon	41P	
White	01W	
Willow	42P	
Yam	44P	

CHANGES

Additions		
S, M, L, XL, 2XL		Heliconia, Orchid, Topaz Blue
Deletions		
S, M, L, XL, 2XL		China Blue
Total Net Change 20 SKU's		

PIGMENT DYE REFERS TO WASHED DOWN COLOURS THAT CONTINUE TO SOFTEN AND AGE WITH WASHING. PIGMENTS ARE INSOLUBLE COLOUR PARTICLES ATTACHED TO THE SURFACE OF CLOTH USING A BINDING AGENT. SLIGHT SHADE VARIATIONS ARE INHERENT IN THE PIGMENT DYE PROCESS.

DUE TO THE NATURE OF THE GARMENT DYING PROCESS, PIGMENT DYED GOODS SHOULD ALWAYS BE WASHED SEPARATELY BEFORE WEARING TO AVOID BLEEDING ISSUES.