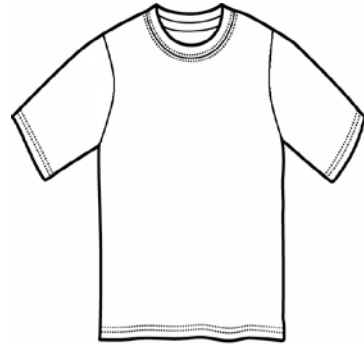


Gildan Activewear 2016 Europe Product Line



STYLE 8000

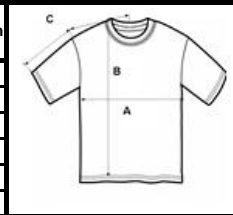
DryBlend Adult T-Shirt

| DETAILS | |
|------------|---|
| Weight | 190 g/m2 (180 g/m2 in White) |
| Content | 50% cotton / 50% polyester preshrunk jersey knit |
| Features | DryBlend technology: delivers moisture-wicking properties Seamless twin needle 2,2 cm collar Taped neck and shoulders Heat transfer label Twin needle sleeve and bottom hems Quarter-turned to eliminate centre crease |
| Sizes | S - 2XL |
| Case Packs | S - 2XL 72 pieces |
| Colours | 8 |
| SKU's | 40 |

NOTES

SPECIFICATIONS

| Size | Chest/inches (A) | Chest/cm | Length/inches (B) | Length/cm | CB | |
|----------|---------------------|----------|----------------------|-----------|----------------------|--------------|
| | | | | | Sleeve/inches (C) | CB Sleeve/cm |
| Small | 18 | 46 | 28 | 71 | 15.63 | 40 |
| Medium | 20 | 51 | 29 | 74 | 17 | 43 |
| Large | 22 | 56 | 30 | 76 | 18.50 | 47 |
| X-Large | 24 | 61 | 31 | 79 | 20 | 51 |
| 2X-Large | 26 | 66 | 32 | 81 | 21.50 | 55 |
| Tol. | +/-1 | +/- 2.54 | +/-1 | +/- 2.54 | +/- 0.75 | +/- 1.91 |



COLOURS

| S - 2XL | |
|-------------|------|
| Black | 036C |
| Irish Green | 167C |
| Navy | 032C |
| Orange | 037C |
| Red | 040C |
| Royal | 051C |
| Sport Grey | 095H |
| White | 030N |

No changes for 2016

Total Net Change 0 SKU's