

ANNAPURNA WOMAN SU1111



DESCRIPTION

Cotton sweatshirt, long sleeve raglan style, 2x2 rib in collar, cuffs and waist. Crew neck with reinforcement cover on the inside of the neck. Front detail of crossed stitching, with 2x2 ribbed fabric overlay.

COMPOSITION

100% cotton terry, 260 gsm.

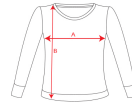
REMARKS

Heather grey colour (58): 85% cotton / 15% viscose.
*Removable label.
*Duo concept.

SIZES

Adults: S · M · L · XL · XXL / Kids:

SCHEME



QUANTITIES

	Box	Pack
Adults	30 un.	1 un.



COLORS

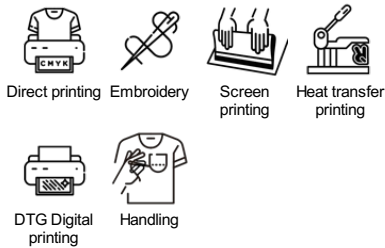


SIZES

Adults	S	M	L	XL	XXL
WIDTH (A)	48cm	51cm	54cm	57cm	60cm
HEIGHT (B)	66cm	67cm	68cm	69cm	70cm

*[Measured from the edge 1 cm below the sleeves / Measured from the highest point of the shoulder to the end of the garment]

PRINTING TECHNIQUES AVAILABLE



RELATED MODELS



MALONE CF1031



MALONE WOMAN CF1032



ANNAPURNA SU1104