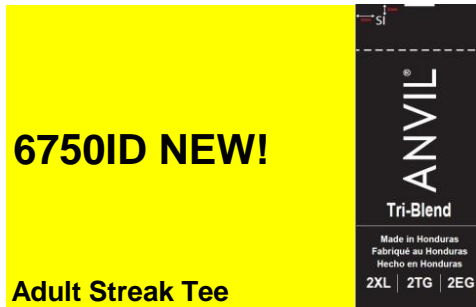


ANVIL®



DETAILS

Weight

Content

Yarn Count

Features

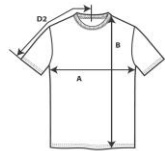
159.0 G/SqM
 50% Polyester, 32% Combed Ring spun Cotton, 18% Viscose
 32/1
 High stitch density for smoother printing surface
 Wicking properties
 Semi-fitte
 Side seam construction
 Shoulder-to-shoulder tape and 5/8" seamed collar
 Single-needle topstitched front neck
 Twin-needle sleeve and bottom hem
 TearAway label
 Oeko-Tex® Standard 100 Certified
 XS-2XL
 XS - 2XL 36 PIECES
 3
 18

Sizes

Case Packs

Colours

SKU's



2)

Chest (A)

Length from HPS (B)

Sleeve length (centre back) (D2)

Tol-	Tol+	XS	S	M	L	XL	2XL
1.905	1.905	40.640	45.720	50.800	55.880	60.960	66.040
2.540	2.540	66.040	68.580	71.120	73.660	76.200	78.740
1.905	1.905	36.830	40.005	43.180	46.355	49.530	52.705

Tol-	Tol+	XS	S	M	L	XL	2XL
0.750	0.750	16.000	18.000	20.000	22.000	24.000	26.000
1.000	1.000	26.000	27.000	28.000	29.000	30.000	31.000
0.750	0.750	14.500	15.750	17.000	18.250	19.500	20.750

XS-2XL

COLOURS

ID Maroon

ID Orion

ID Silver

Code

73G

47G

48G

CHANGES

Additions

XS, S, M, L, XL, 2XL

Total Net Change 18 SKU's

ID Maroon, ID Orion, ID Silver