

EH 50

Ganci automatici
Automatic couplings
Vollautomatische
Anhängerkupplungen
Crochets automatiques

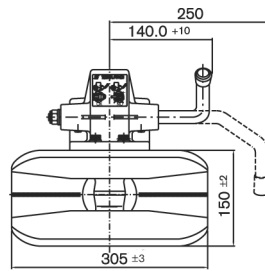
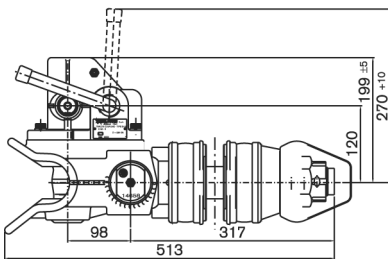
Per occhioli - For drawbar eyes
Für Zugösen - Pour anneaux

Ø
50

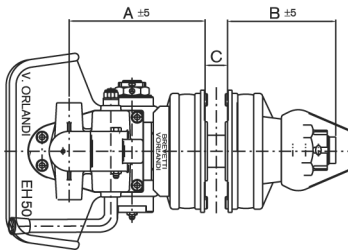
94 / 20 / CE

Dati tecnici - Technical data - Technische Daten - Données techniques

Tipo Type Typ Type	Versioni Versions Ausführungen Versions	Flangia Hole pattern Lochbild Entr'axe mm	Valore D D-Value D-Wert Valeur D kN	Peso Weight Gewicht Poids kg	94 / 20 / CE	
					Classe Class Klasse Classe	Omologazione Homologation Genehmigung Homologation
EH 503	EH 503A0 EH 503B0	120x55	130	37	C50-X	e3 00-0395
EH 502	EH 502A0 EH 502B0	140x80	220	39	C50-X	e3 00-0394
EH 501	EH 501A0 EH 501B0	160x100	220	39	C50-X	e3 00-0393
EH 531	EH 531A0 EH 531B0	160x100	220	41		

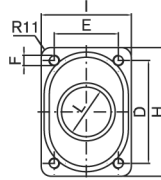
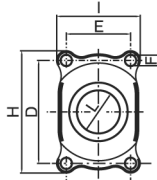


Dimensioni A/B: quote del gancio montato (su veicolo)
Dimensions A/B: dimensions of the coupling installed to the vehicle
Dimensionen A/B: Dimensionen der Kupplung im Fahrzeug
Dimensions A/B: dimensions du crochet monté sur le véhicule



EH 501-EH 502-EH 503

EH 531



Versione - Version
Ausführung - Version

- A** Leva alta
Action lever upwards
Handhebel aufwärts
Lever d'ouverture vers le haut
- B** Leva bassa
Action lever downwards
Handhebel abwärts
Lever d'ouverture vers le bas

Tipo - Type Typ - Type	A (mm)	B (mm)	C (mm)	D (mm)	E (mm)	F (mm)	H (mm)	I (mm)	L (mm)
EH 503	210	170	35	120	55	Ø14	164	118	Ø74
EH 502	212	168	35	140	80	Ø19	190	130	Ø84
EH 501	212	168	35	160	100	Ø19	190	130	Ø92
EH 531	215	165	35	160	100	M16	200	140	Ø93

